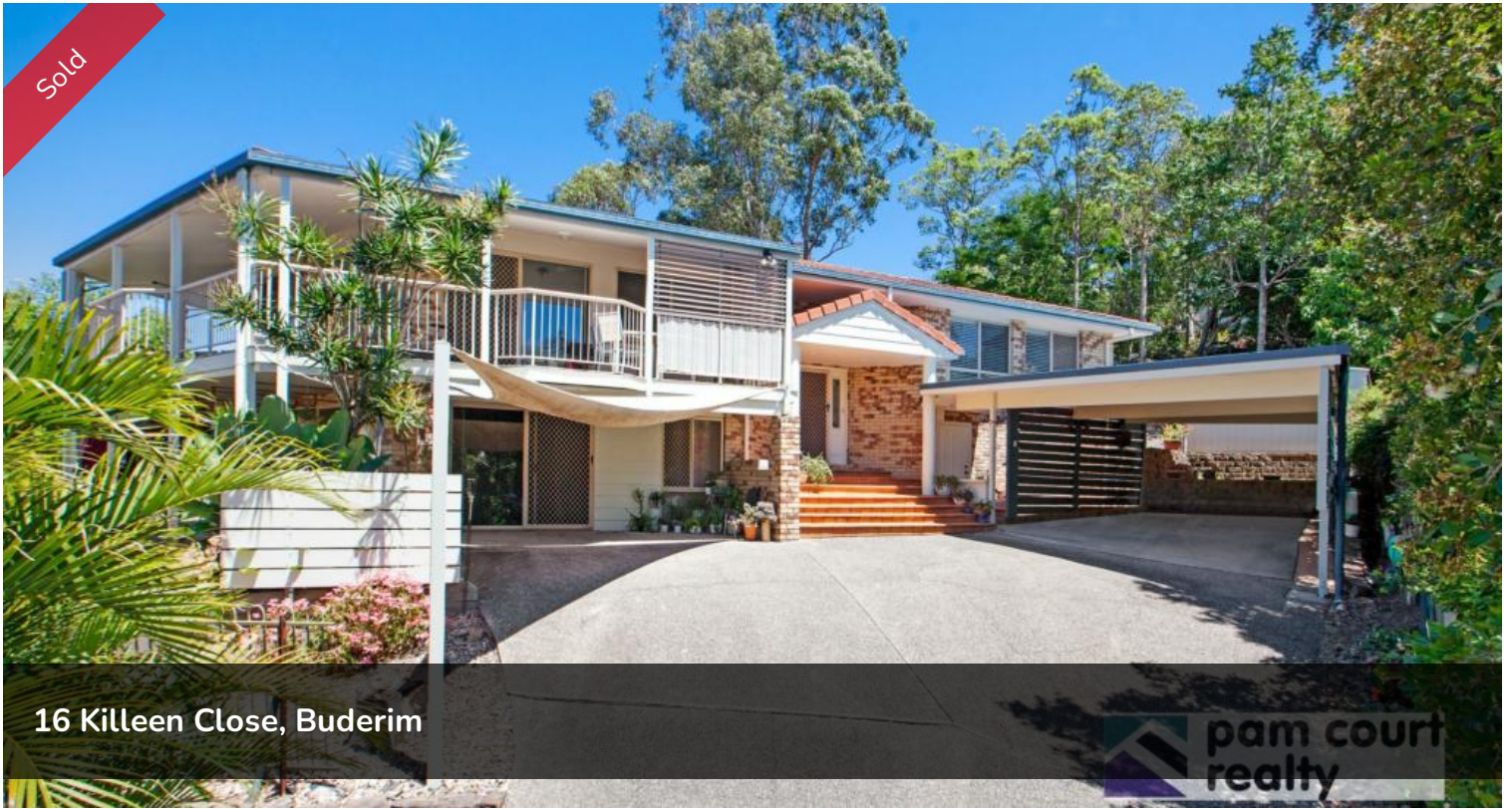


Sold



16 Killeen Close, Buderim

pam court  
reality



## Elevated Buderim Home with Fully Self Contained...

Presenting 16 Killeen Close, Buderim. If you need room for the extended family or are looking to help boost your ability to pay off the mortgage, this beautiful brick and tile home is for you.

The main residence upstairs offers:

- \*1 king size bedroom with ensuite
- \*2 large bedrooms with built ins and fans
- \*Large bathroom with bath
- \*Separate toilet
- \*Tassie oak timber kitchen
- \*Separate dining & large lounge area
- \*High ceilings
- \*Lots of natural light and sea breezes
- \*Large wrap around deck with great views over Buderim Meadows Estate.

Then downstairs you have a fully self-contained flat offering:

- \*Separate entry
- \*1 extra-large bedroom (could be split in 2)
- \*Shower & toilet
- \*Combined lounge/dining area

🛏 4 🚿 3 🚿 2 📏 1,136 m<sup>2</sup>

Price SOLD for \$600,000

Property Type Residential

Property ID 92

Land Area 1,136 m<sup>2</sup>

### Agent Details

Mandy Watson - 0412 988 487

### Office Details

Mountain Creek  
Suite 4, Mountain Creek Medical  
Centre Karawatha Drive Mountain  
Creek QLD 4557 Australia  
07 5444 8188

\*Modern kitchen with island bench

\*Access to the garden area

The flat is also currently rented out at \$250 per week with a lease up until the end of December 2016. What a great way to help pay the mortgage off fast.

All this has been built on an elevated 1,136m<sup>2</sup> block with plenty of room for a pool as well. This home is sure to impress and is proudly marketed by Attila Mokany.

The above information provided has been furnished to us by the vendor/s. We have not verified whether or not that information is accurate and do not have any belief in one way or the other in its accuracy. We do not accept any responsibility to any person for its accuracy and do no more than pass it on. All interested parties should make and rely upon their own inquiries in order to determine whether or not this information is in fact accurate.