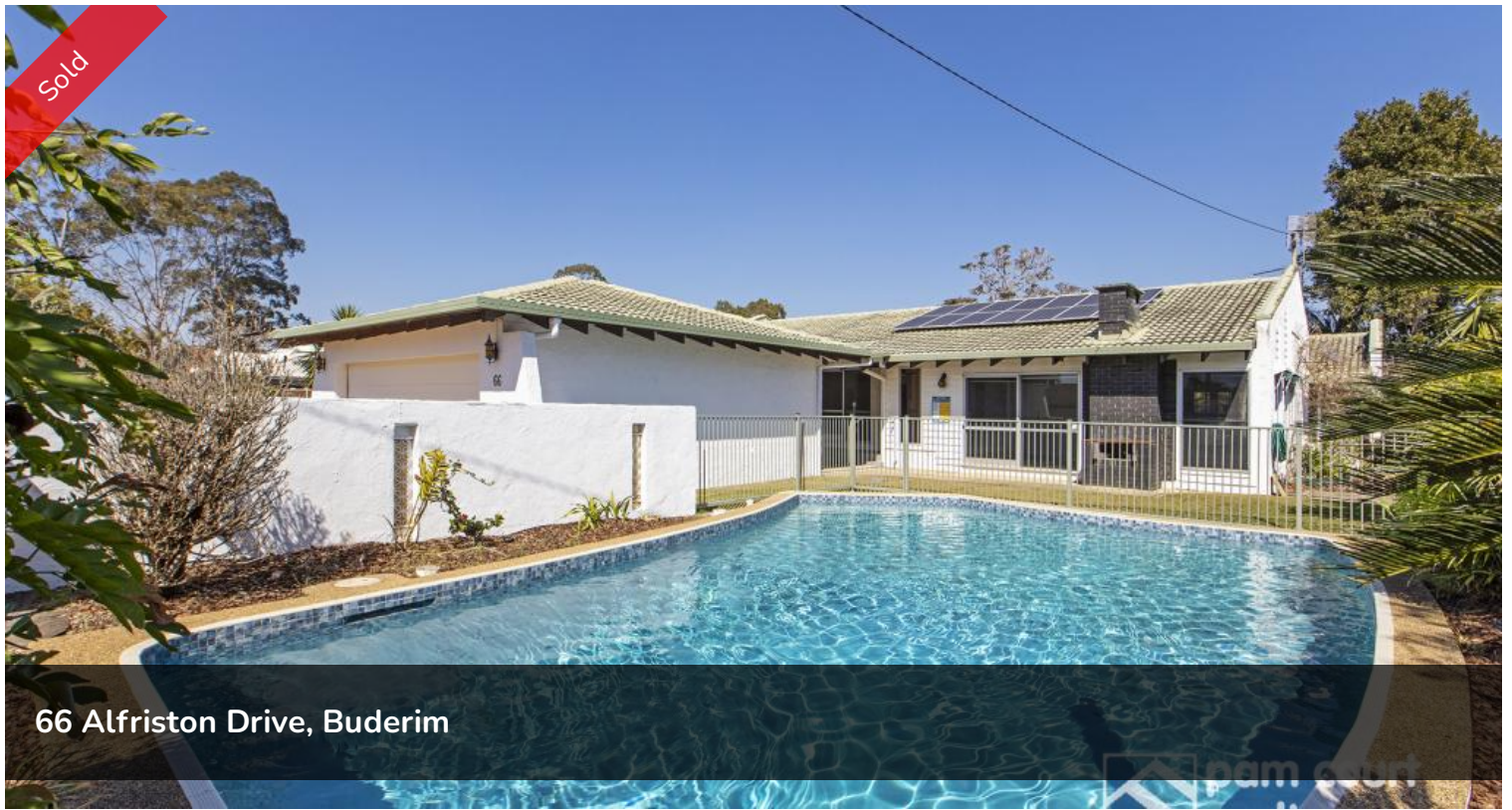


Sold



66 Alfriston Drive, Buderim



Nestled on 1017m² Buderim block.

The original Owners of this family home have recently lovingly refurbished the character-filled home to present it to the market.

The 3 bedroom ensuite home also boasts a separate teenage retreat/rumpus, so the whole family can enjoy this substantial property. The wide double-gated side access leads to the large rear garden, which lends itself to accommodating boats, trailers, caravans and still leave plenty of room to play. Located in Buderim, yet within the Mountain Creek High and Primary School zones, as well as a short stroll to local shops, Woolworths Shopping Complex, Tavern and Mountain Creek Medical Centre.

- Three bedroom ensuite home
- Near new 2 pac kitchen with dishwasher
- Separate rumpus or media room
- Extra large double auto garage
- Private sparkling inground saltwater pool
- 14 panel solar system
- 2 x Air conditioning units
- Convenient shower and toilet located close to the pool area
- Garden shed and carport

🛏 3 🚿 2 🚿 2 🌬 1,017 m²

Price SOLD for \$645,000

Property Type Residential

Property ID 303

Land Area 1,017 m²

Agent Details

Pam Court - 0412 708 313

Mandy Watson - 0412 988 487

Office Details

Mountain Creek
Suite 4, Mountain Creek Medical
Centre Karawatha Drive Mountain
Creek QLD 4557 Australia
07 5444 8188

Seldom does a home with all these attributes come to the market, especially on such a substantial block of land in Buderim.

The above information provided has been furnished to us by the vendor/s. We have not verified whether or not that information is accurate and do not have any belief in one way or the other in its accuracy. We do not accept any responsibility to any person for its accuracy and do no more than pass it on. All interested parties should make and rely upon their own inquiries in order to determine whether or not this information is in fact accurate.