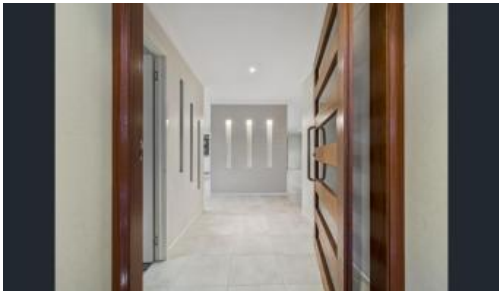


Leased



33 Nandewar Dr, Buderim



Large 4 Bedroom Family Home

Located in the highly sought after 'Timberdale Estate', Buderim, this beautifully appointed home on a large fully fenced block has everything a family friendly residence can offer and much more.

FEATURING:

- 4 bedrooms all with built in wardrobes.
- Double auto garage with internal access.
- Well-designed spacious kitchen featuring an island bench, stainless steel appliances and dishwasher.
- Large rumpus/media room.
- Tiled living area.
- Ceiling fans throughout.
- Split cycle air-conditioning in the living area and main bedroom.
- Large entertainment deck overlooking the fully fenced, landscaped garden.
- Two lockable gated entrances on either side of the house.
- Large lockable storage room under the house, big enough for a Man Cave!
- Lockable storage area under the back deck, suitable for mower, whipper sniper, etc.

🚗 4 🚲 2 🚲 2

Price	\$600 per week
Property Type	Rental
Property ID	324

Agent Details

Rachael Roberts - 07 5444 8188

Office Details

Mountain Creek
Suite 4, Mountain Creek Medical
Centre Karawatha Drive Mountain
Creek QLD 4557 Australia
07 5444 8188

- The property is water compliant, so tenants are responsible for water usage.
- Pets will be considered on application.

This property is water efficient.

Please contact Pam Court Realty today to arrange an inspection.

The above information provided has been furnished to us by the vendor/s. We have not verified whether or not that information is accurate and do not have any belief in one way or the other in its accuracy. We do not accept any responsibility to any person for its accuracy and do no more than pass it on. All interested parties should make and rely upon their own inquiries in order to determine whether or not this information is in fact accurate.