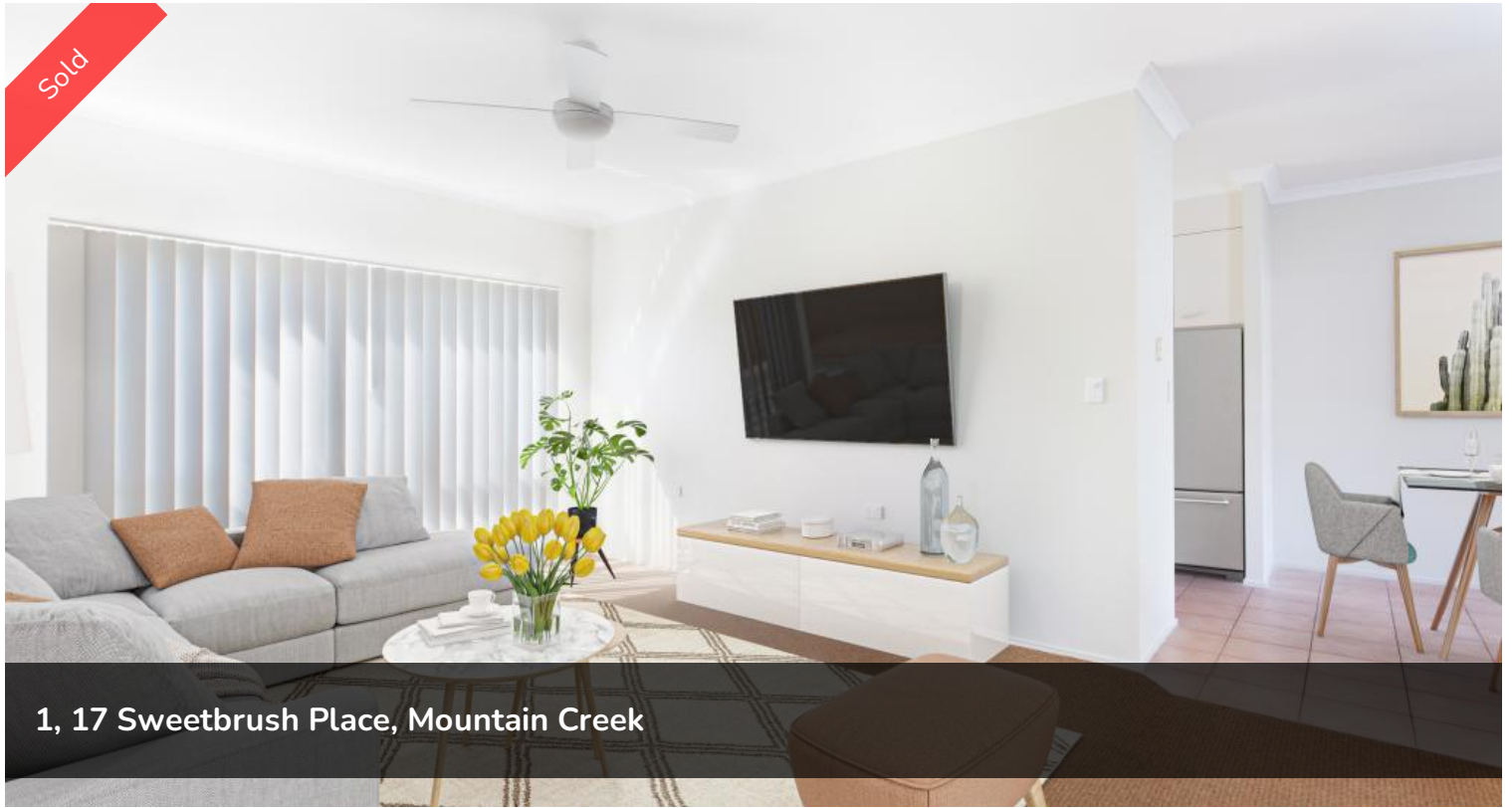


Sold



1, 17 Sweetbrush Place, Mountain Creek



Easy-care duplex close to schools, shops and parks

This 3 bedroom duplex would make the ideal investment, comfortable downsizing option or enviable first home.

The layout is designed for easy low maintenance living with daily life revolving around the open plan kitchen, dining and air-conditioned living area. Anyone who loves to cook will adore the ample bench space and abundance of storage the kitchen has to offer, and entertaining will be a breeze with the dining room effortlessly flowing out to the undercover alfresco area.

All bedrooms are spacious in size and offer built-robos and ceiling fans. The master bedroom has an ensuite and enjoys good separation from the other rooms.

A double auto garage with internal access, and a garden shed for additional storage are just a few of the extra features on offer. Located within an easy bike ride to Mountain Creek Schools, shops and parks and just a short drive to the Sunshine Coast University, Kawana's Health precinct and Mooloolaba's beautiful beaches and cafes.

Features include:

- 3 spacious bedrooms, all with built-in robes & ceiling fans

🛏 3 🚿 2 🚿 2

Price SOLD for \$603,000

Property Type Residential

Property ID 412

Agent Details

Mandy Watson - 0412 988 487

Office Details

Mountain Creek
Suite 4, Mountain Creek Medical
Centre Karawatha Drive Mountain
Creek QLD 4557 Australia
07 5444 8188

- Master bedroom complete with an ensuite
- Air-conditioned living area
- Well-appointed kitchen with ample storage & bench space
- Separate dining area
- Ceiling fans throughout
- Undercover private alfresco area overlooking the low maintenance garden
- Garden Shed
- Double auto garage with internal access
- Quiet cul-de-sac location and within the Mountain Creek School zones

The above information provided has been furnished to us by the vendor/s. We have not verified whether or not that information is accurate and do not have any belief in one way or the other in its accuracy. We do not accept any responsibility to any person for its accuracy and do no more than pass it on. All interested parties should make and rely upon their own inquiries in order to determine whether or not this information is in fact accurate.