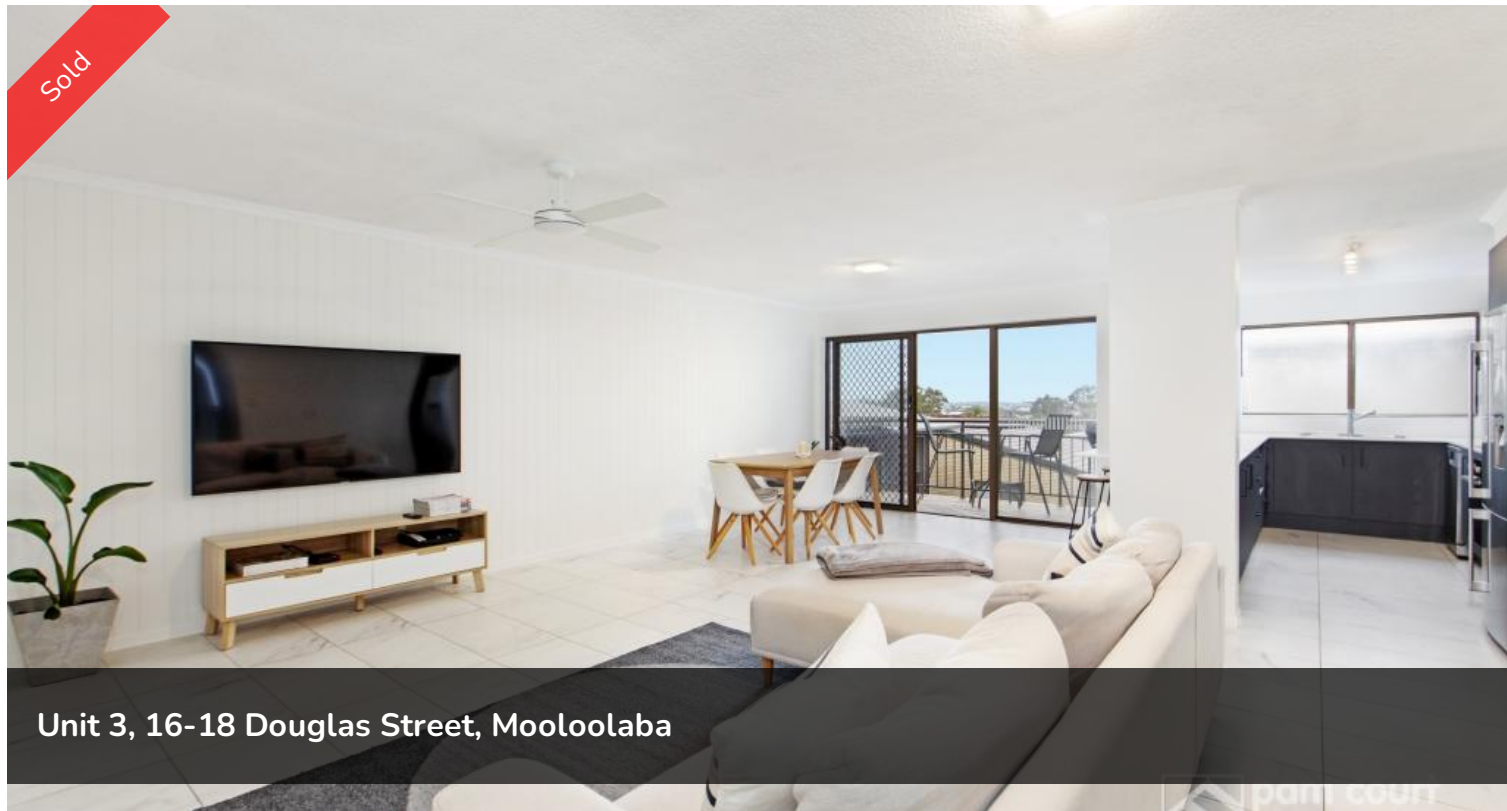


Sold



Unit 3, 16-18 Douglas Street, Mooloolaba



Fully renovated unit a short walk from the beach

Impeccably renovated throughout and ready for you to enjoy, this could be the picture-perfect property you've been searching for. This idyllic two-bedroom, one-bathroom unit is set within a sought-after pocket of Mooloolaba just a short walk from the beach and only moments from bustling cafes, renowned restaurants, boutique shops and a host of attractions.

From the entry, you are welcomed into the light-filled and open-plan kitchen, dining, and lounge room with direct access to the covered balcony. Large format tile floors flow underfoot and are ready for sandy feet while the kitchen is a cook's dream with gorgeous cabinets, modern appliances, sweeping benchtops and breakfast bar seating.

Both bedrooms are large and have built-in robes with a central bathroom offering a separate toilet for convenience. Completing this impressive unit's long list of features is an internal laundry, built-in storage, and a single garage parking space.

Whether you're after your first home, a beachside hideaway, or a quality addition to your investment portfolio, this is an opportunity too good to miss.

Features include:

* Fully renovated 2 bedroom unit in the heart of Mooloolaba

🚗 2 🚲 1 🚻 1

Price SOLD for \$600,000

Property Type Residential

Property ID 442

Agent Details

Mandy Watson - 0412 988 487

Office Details

Mountain Creek
Suite 4, Mountain Creek Medical
Centre Karawatha Drive Mountain
Creek QLD 4557 Australia
07 5444 8188

- * Both bedrooms complete with built-in robes & ceiling fans
- * Spacious light filled lounge and dining area
- * Modern bathroom with a separate toilet
- * Separate laundry
- * Stylish kitchen with modern stainless steel appliances, including a dishwasher, and ample bench and storage space
- * Undercover balcony to capture the sea breezes
- * Single lock up garage
- * Short walk to beach, cafes, and shops
- * Excellent Tenants in place until 5th July 2022 and currently paying \$450.00 per week
- * Merinda Lodge is a tightly held complex of just 9 units and offers low body corporate fees
- * 300 metres from Mooloolaba Beach
- * 50 metres from Mooloolaba State Primary School

The above information provided has been furnished to us by the vendor/s. We have not verified whether or not that information is accurate and do not have any belief in one way or the other in its accuracy. We do not accept any responsibility to any person for its accuracy and do no more than pass it on. All interested parties should make and rely upon their own inquiries in order to determine whether or not this information is in fact accurate.