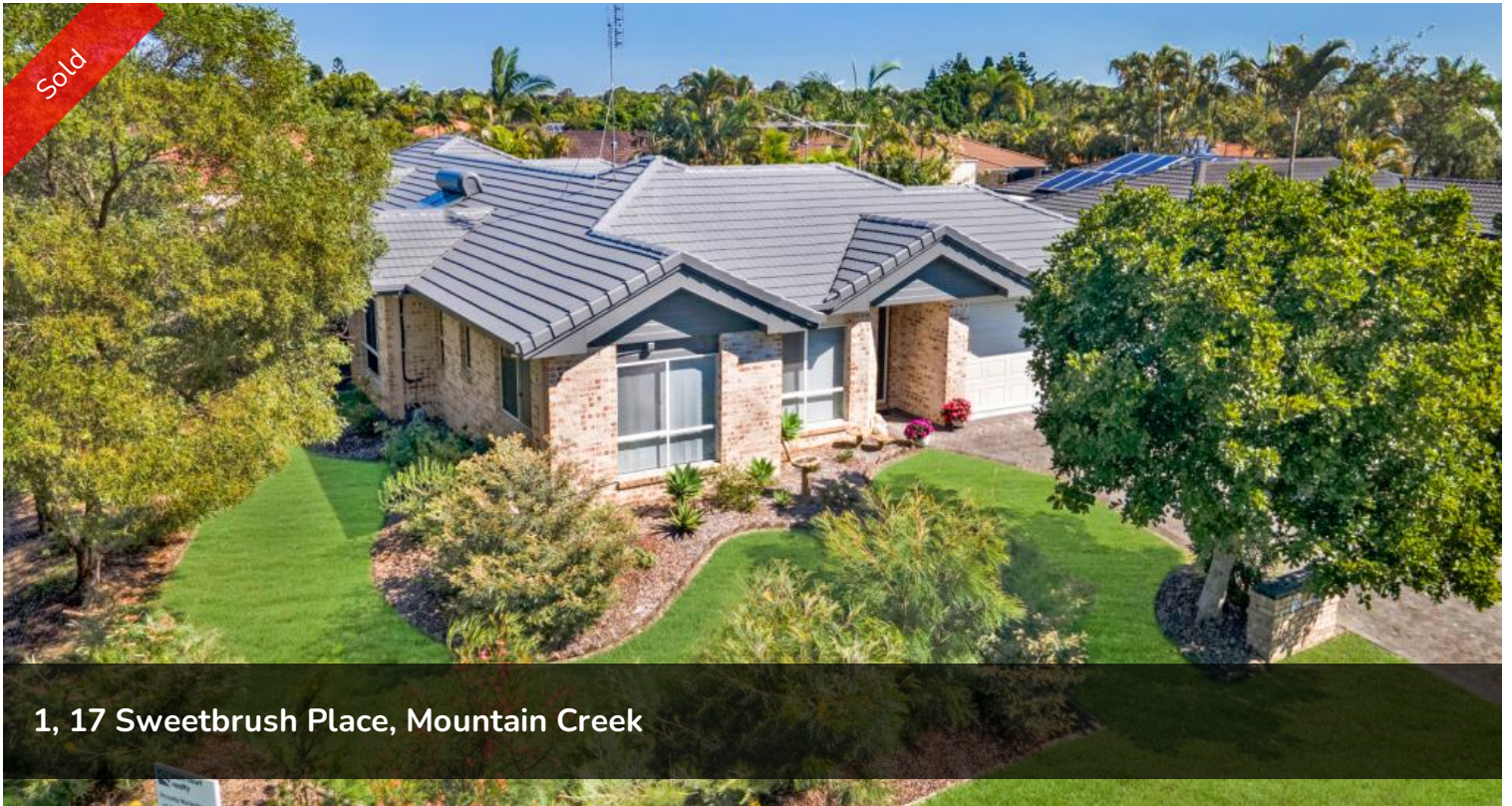


Sold



1, 17 Sweetbrush Place, Mountain Creek



Bright and airy duplex in a convenient location

Located in a quiet cul-de-sac and filled with captivating details, this versatile property could be an incredible first home or a great investment opportunity!

The galley kitchen is light and airy, with stylish white cabinets and easy-to-clean terracotta-style floors that flow into the meals area. Adjacent to it, the sprawling living room is filled with light, and it's the ideal spot for entertaining friends and family or just relaxing.

The generously sized main bedroom enjoys good separation from the other bedrooms and is complete with an ensuite and triple door built-in robe. The other two bedrooms are equally spacious and comfortable, with tons of natural light and practical built-in robes. All bedrooms have ceiling fans and air conditioning, so you'll be comfortable year-round.

The delights continue outside, with a double-car garage, a lovely private back garden and a practical garden shed to store your tools and toys.

Ideally located, you'll be close to Mountain Creek Schools, shops and parks and just a short drive to the local university, Kawana's Health precinct and

🛏 3 🚗 2 🚗 2

Price SOLD for \$758,000

Property Type Residential

Property ID 501

Agent Details

Mandy Watson - 0412 988 487

Office Details

Mountain Creek
Suite 4, Mountain Creek Medical
Centre Karawatha Drive Mountain
Creek QLD 4557 Australia
07 5444 8188

Mooloolaba's beautiful beaches and cafes.

Features include:

- 3 spacious bedrooms, all with built-in robes, ceiling fans and air-conditioning
- Master bedroom complete with an ensuite
- Air-conditioned light and airy living area
- Well-appointed kitchen with ample storage & bench space
- Separate dining area
- High ceilings throughout
- Ample storage options
- Recently repainted roof
- Undercover private alfresco area overlooking the low maintenance immaculate gardens
- Garden shed
- Double auto garage with internal access
- Quiet cul-de-sac location and within the Mountain Creek School zones

The above information provided has been furnished to us by the vendor/s. We have not verified whether or not that information is accurate and do not have any belief in one way or the other in its accuracy. We do not accept any responsibility to any person for its accuracy and do no more than pass it on. All interested parties should make and rely upon their own inquiries in order to determine whether or not this information is in fact accurate.