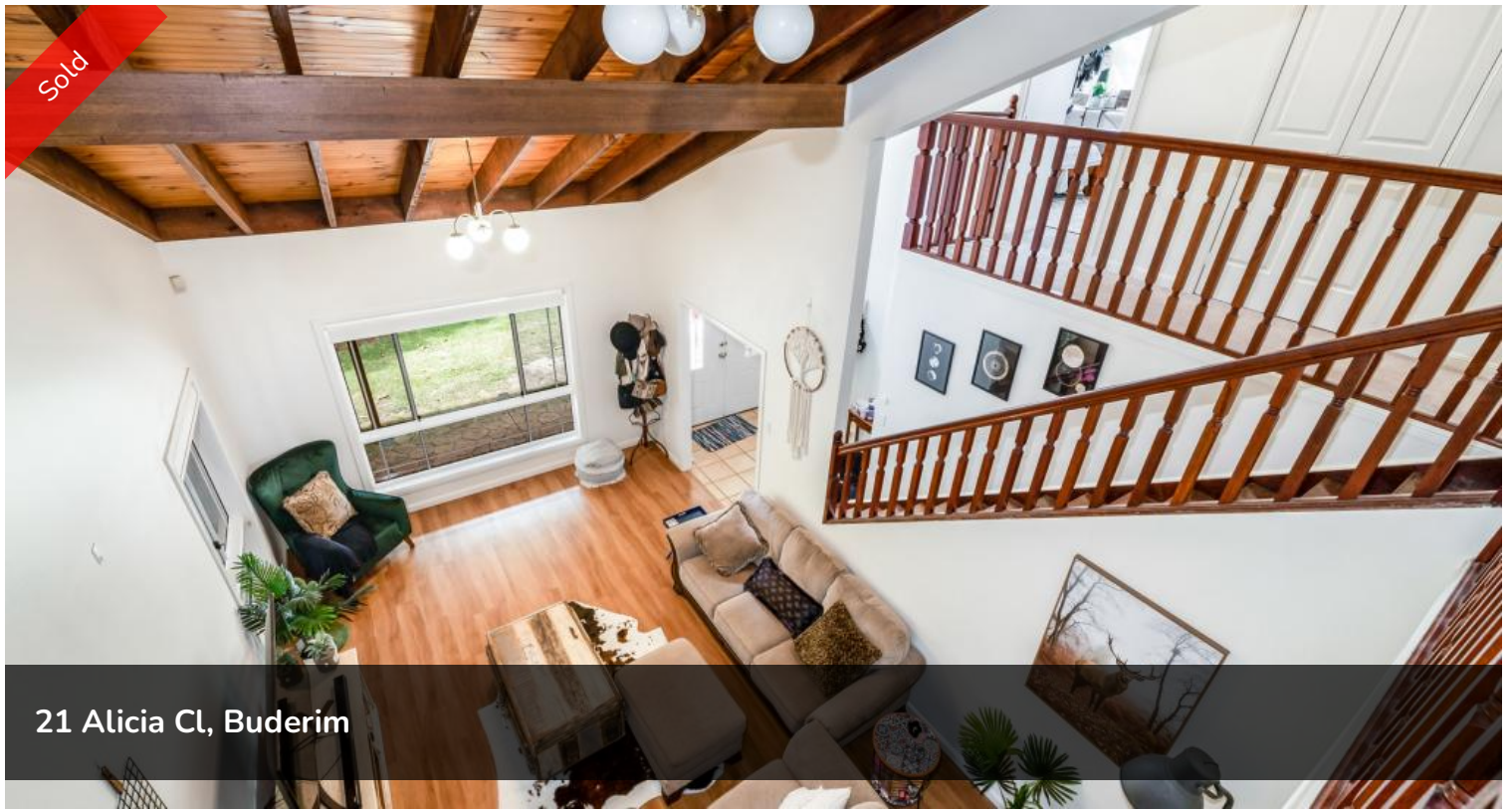


Sold



21 Alicia Cl, Buderim



Potential Plus!

Don't miss the opportunity to secure this slice of Buderim paradise, a rare two-level home with a vintage Federation-style influence, beautifully anchored on a leafy 719m2 block. Set in a sleepy, treed, quiet cul-de-sac, the home's elevated position offers serene green views and cool breezes, creating a blissful atmosphere the whole family will surely love.

This home is in need of some love but look what it has to offer...

Four bedrooms cascade across the upper-level layout along with a two-way bathroom with direct access to the hallway and one of the minor bedrooms. All of these peaceful sleeping quarters have built-in robes, the master bedroom comes complete with air-conditioning, ensuite and ample wardrobe space.

The downstairs level boasts four well-lit living zones, including two dining areas and two lounges – one of which is perfectly positioned off the entry with a double-height timber vaulted ceiling. More amazing features to note include the downstairs study, entertainer's covered patio and double auto garage with internal access, plus the large backyard fringed with beautiful greenery and room for a pool.

🛏 4 🚿 3 🚿 2 📏 719 m2

Price SOLD for \$930,000
Property Type Residential
Property ID 506
Land Area 719 m2

Agent Details

Pam Court - 0412 708 313

Office Details

Mountain Creek
Suite 4, Mountain Creek Medical
Centre Karawatha Drive Mountain
Creek QLD 4557 Australia
07 5444 8188

Features include:

- 4 spacious bedrooms plus separate air-conditioned study
- Master suite complete with ensuite, ample wardrobe space and air-conditioning
- 3 bathrooms including ensuite
- 4 living zones – lounge, dining, formal dining & air-conditioned family room
- Generous kitchen with double pantry, breakfast bar and ample storage and cupboards
- Private patio/deck at rear overlooking treed gardens with room for a pool
- Cathedral ceilings in lounge and high ceilings throughout
- Generous storage throughout the home
- Nestled on 719m² block in a quiet Buderim cul-de-sac
- Centrally located and within easy reach of all Buderim shopping and facilities

The above information provided has been furnished to us by the vendor/s. We have not verified whether or not that information is accurate and do not have any belief in one way or the other in its accuracy. We do not accept any responsibility to any person for its accuracy and do no more than pass it on. All interested parties should make and rely upon their own inquiries in order to determine whether or not this information is in fact accurate.